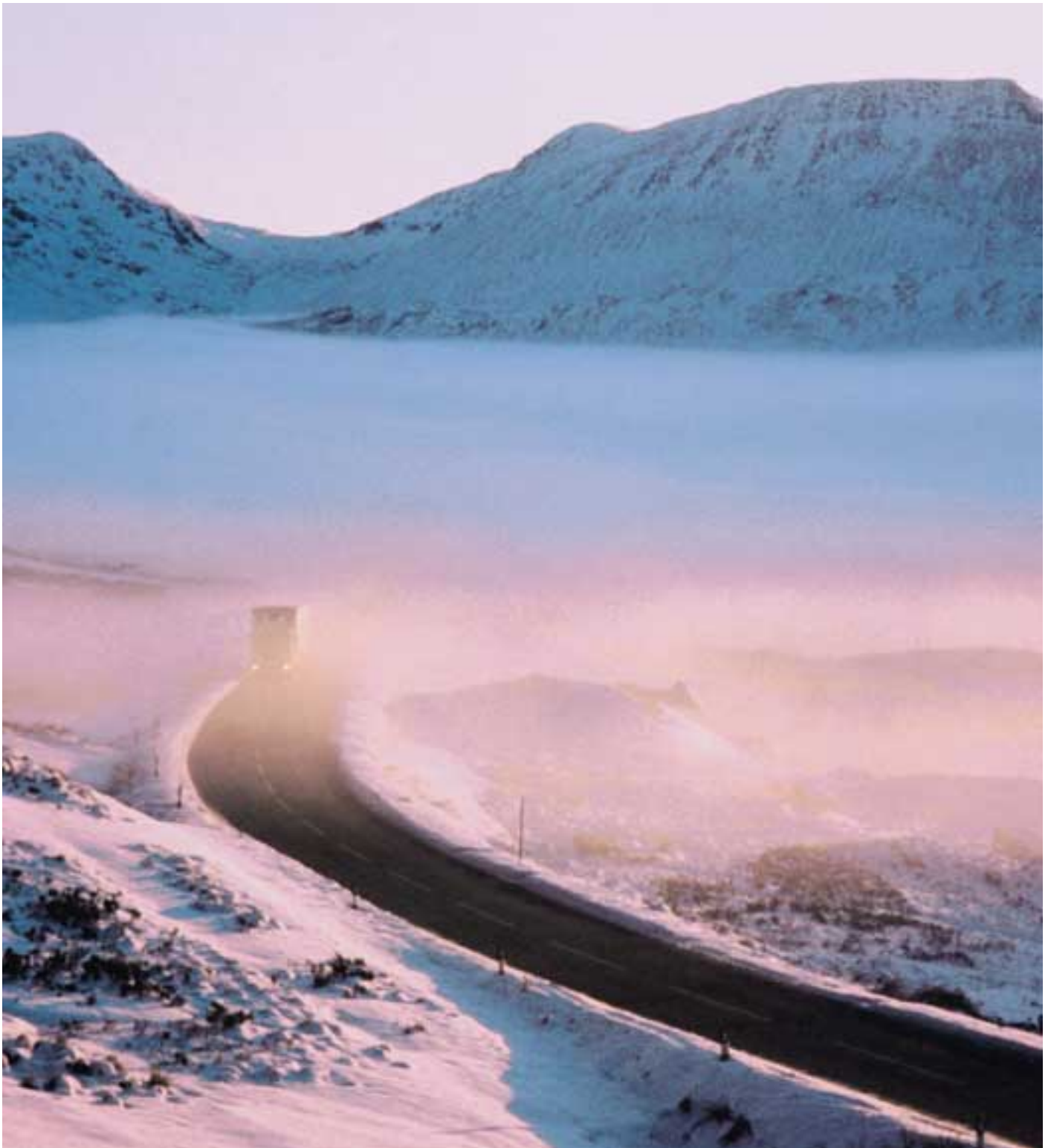




The Heating Specialists

for vehicle cabs and load compartments



Trumatic E Liquid Gas Heaters...

Even in the depths of winter, a pleasantly warm place to work is one of the benefits to which every HGV driver is entitled. The Trumatic E goes about its task reliably and without a murmur, providing the driver with relaxing rest breaks and undisturbed nights.

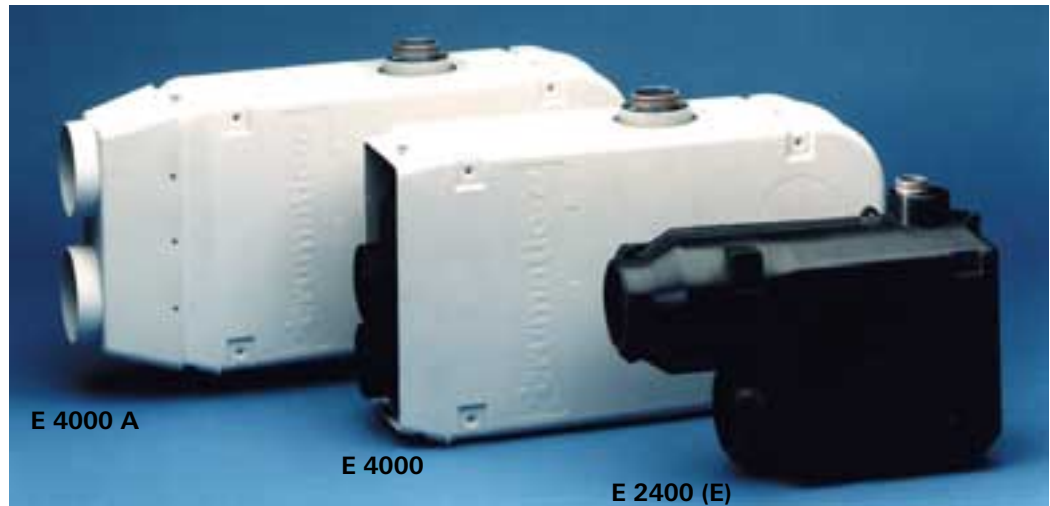
The Trumatic E liquid gas heater has been designed to save space and can be deployed anywhere. The heater, the fan, the thermostat and the controller are combined in a "package". All models are equipped with closed-circuit combustion (see drawing on page 3). An electronic control system ensures that heater runs automatically and also monitors the operation and safety of the system. The room temperature can be selected at the control panel.

Trumatic E 2400 the smallest heater model

The Trumatic E 2400 is currently the most compact warm-air heater in its performance class that uses liquid gas.

It is particularly suitable for vehicle cabs, delivery vans etc.

Technical Data:
Rated thermal output: 2400 W
Operating pressure: 30 or 50 mbar
Gas consumption: up to max. 200 g/h
Power consumption: at 12 V (24 V) up to max. 1.1 A (0.7 A)
Air delivery capacity: up to max. 78 m³/h
Dimensions mm LxBxH: 370 x 248 x 123



Trumatic E 2400 E

Special version for natural gas

The heater runs on fuel drawn from the vehicle's own CNG system, obviating the need for an additional fuel tank.

It is particularly suitable for use in commercial and utility vehicles, delivery vans, minibuses and taxis.

Technical Data:

Gas type: Natural gas
Operating pressure: 50 mbar
Rated thermal output: 2400 W
Gas consumption: up to max. 240 l/h
Power consumption: at 12 V (24 V) up to max. 1.1 A (0.7 A)
Air delivery capacity: up to max. 78 m³/h
Dimensions mm: LxBxH: 370 x 248 x 123

Trumatic E 4000

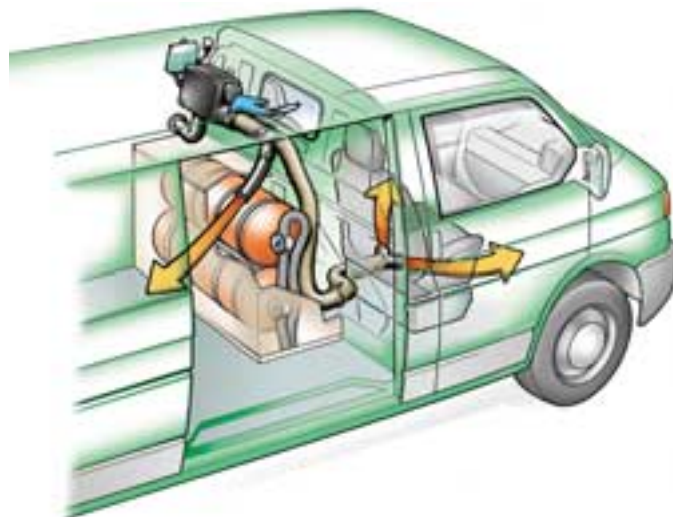
The powerful model

The Trumatic E 4000 and E 4000 A are suitable for heating large delivery vans and load compartments.

In vehicles with an electric battery cut-off switch or main switch the heater can be operated using the battery cut-off facility (BTS, available as accessory), also in conjunction with a Truma timer (ZUE 2). This facility is also available for the Trumatic E 2400.

Technical Data:

Rated thermal output: 3700 W
Operating pressure: 30 or 50 mbar
Gas consumption: up to max. 310 g/h
Power consumption: at 12 V (24 V) up to max. 2.3 A (1.06 A)
Air delivery capacity: up to max. 104 m³/h
Dimensions mm LxBxH: E 4000 530 x 300 x 162
E 4000 A 600 x 300 x 162



...for vehicle cabs and load compartments



- 1 = Trumatic E 2400
- 2 = Floor cowl
- 3 = Hot air ducts
- 4 = Y-tube
- 5 = Swivelling ventilation jets SCW
- 6 = Control panel with thermostat



Transport of hazardous goods

Trumatic E liquid gas heaters are approved for the cabs and load compartments of vehicles for transporting hazardous goods (with Truma VG2 control unit). The Truma instructions regarding the relevant ADR/GGVs regulations must be followed.

Hot Air Distribution

An optional Truma System accessory can be used to distribute hot air in the cab and the load compartment (see drawing on right).

Additional installation options available on request.



Control panel for installation in existing cut-outs (e.g. in dashboard).

Permanently installed load compartment heaters

With the Trumatic E liquid gas heater you can transport your cold-sensitive freight without damage, even when the outside temperature is well below freezing. The heaters are installed inside or outside the load compartment and keep the goods at the right temperature.



The mobile load compartment heater in the wire mesh box has been approved by the relevant employees' liability insurance associations.

Mobile Load Compartment Heaters

The indispensable helper in every commercial fleet! These can be placed next to the freight as required and are not restricted to one particular vehicle, unlike permanently installed heaters. Not suitable for hazardous freight!

The illustration (top right) shows the complete, self-contained heating unit in a wire mesh container with lockable lid. The unit also has its own power supply. The control panel and gas cylinder valves are accessible from the outside.

Accessories

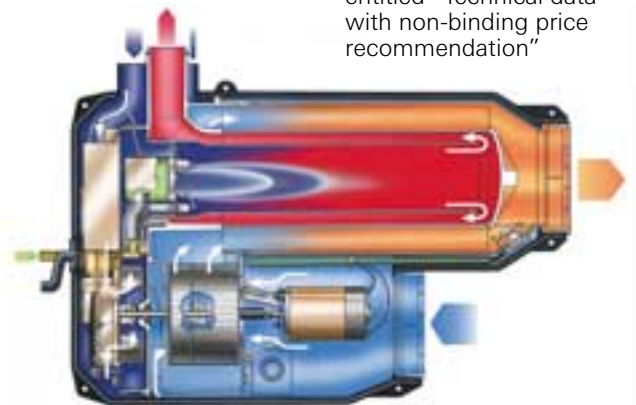
Truma accessories complement all heaters and provide the optimum solution for every situation:

Remote sensor – monitors the space temperature, independently of the location of the control panel.

External switch – for switching the heating on and off from outside the load compartment.

ASM alarm – emits an acoustic signal in the event of malfunctions.

More product information can be found in our brochure entitled "Technical data with non-binding price recommendation"



Trumatic E 2400 sectional model

International service and sales

Austria:

Geissler GmbH, Neusarlring 127, 3373 Kemmelbach/Ybbs,
Tel. (07412) 522 25, Fax (07412) 522 25 17

Karl Krammer GmbH, Triester Str. 204, 1232 Wien,
Tel. (01) 667 15 75, Fax (01) 667 15 75 15

Wölfel GmbH, Bosch-Dienst, Industriezentrum NÖ-Süd Str. 3,
2355 Wr. Neudorf,
Tel. (02236) 624 31, Fax (02236) 62 43 15 19

Belgium:

Gautzsch-Gimeg N.V., Drie Sleutelstraat 74,
9300 Aalst, Tel. (053) 70 66 77, Fax (053) 21 61 62

Byelorussia:

Tachograph GmbH, 15 P. Brovki Str., 220072 Minsk,
Tel. (017) 22 66 82 02, Fax (017) 289 25 52

Croatia:

Klimamobil, Stefanovecki zavoj 17a, 10040 Zagreb,
Tel. (01) 291 01 43, Fax (01) 295 05 21

Czech Republik:

KOV, Kolár & Synové, Sokolská 615, 28101 Velim,
Tel. (0321) 76 35 58, Fax (0321) 76 33 37

Denemark:

Olympic A/S, Tvaervej 2, 6640 Lunderskov,
Tel. 75 58 57 00, Fax 75 58 63 07

Finland:

Kehä Caravan Tukku Oy, Koskelontie 15, 02920 Espoo,
Tel. (09) 84 94 30 34, Fax (09) 84 94 30 30

France:

Euro Accessoires, ZAE Parc de Champagne, B.P. 89,
07303 Tournon-Sur-Rhone Cedex,
Tel. (04) 75 06 92 92, Fax (04) 75 06 92 96

Great Britain:

Truma (UK) Ltd., Truma House, Eastern Avenue,
DE 13 OBB Burton Upon Trent, Staffordshire
Tel. (01283) 52 82 01, Fax (01283) 52 82 02

Greece:

Bournas G. – G. Efthimiou O.E.,
P. Ralli 36 & AG Annis, 12241 Egaleo-Athen,
Tel. (0210) 346 14 14, Fax (0210) 342 34 03

Hungary:

Virág Trans, újhegyi út. 7, 1108 Budapest,
Tel (01) 433 57 61, Fax (01) 261 32 49

Iceland:

Húsbílar, Afl ehf., Gránufélagsgata 49, 600 Akureyri,
Tel. (0462) 79 50, Fax (0461) 26 80

Italy:

Dimatec S.p.A., Via Galileo Galilei 7, 22070 Guanzate,
Tel. (031) 352 90 61, Fax (031) 352 96 89

Japan:

Carac Industry Co., Ltd. 1-4-2 Heiwadai,
Nerima-ku, Tokyo 179,
Tel. (03) 39 31 02 20, Fax (03) 39 31 07 06

Lithuania

Autokurtas, Lazdijy Str. 20, 3018 Kaunas,
Tel. (037) 39 10 90, Fax (037) 39 14 54

Luxembourg:

Motorhomes Center, 31, rue de Mersch,
7470 Saeul, Tel. 63 83 02, Fax 63 94 70

Geiben Ets. s.à r.l. Caravanes, 260, route d'Esch,
4451 Belvaux, Tel. 59 15 19, Fax 59 44 55

Netherlands:

Gautzsch-Gimeg B.V., Strijkviertel 25,
3454 PH De Meern (Utr.),
Tel. (030) 662 95 22, Fax (030) 666 53 97

Norway:

Neptus A.S., Høymyrmarka 7
1391 Vollen, Tel. (6675) 99 50, Fax (6675) 99 51

Poland:

Truma Polska Sp. z. o. o., Generalne Przedstawicielstwo ul.
Kuczkowskiego 3/2U, 31619 Krakow,
Tel. (012) 641 02 41, Fax (012) 641 91 33

Portugal:

J.C.L. Andrade Lda., Apartado 719, Lugar do Padrao, E..N. 327
S. Miguel do Souto, 4524-906 Souto V.F.R., Sta. Maria da Feira,
Tel. (256) 80 10 34, Fax (256) 80 14 88

Marcampo Lda. Artigos de Campismo, Av. Alm. Gago Coutinho,
56 D, 1700 Lisboa, Tel. (21) 848 67 76, Fax (21) 847 06 99

Russia:

Poliavto, Companija, Hawskaja Str. 3 – Ab. 3, 113162 Moskau,
Tel. (095) 232 00 29, Fax (095) 958 27 57

Slovak Republik:

Tamex automerkop spol. s. r. o., Kováčsova c. 359,
95110 Bratislava, Tel. (02) 44 45 49 20, Fax (02) 44 45 49 35

Slovenia:

Prebil D.O.O., Servis Trogvina, Montaza Srediska 4,
1000 Ljubljana, Tel. (061) 542 63 70, Fax (061) 542 63 71

Spain:

Stimme S.L., C/Ildefonso Carrascosa No. 2,
E-46560 Massalfassar (Valencia),
Tel. (961) 40 00 58, Fax (961) 40 24 62

Sweden:

Alde International Systems AB, Wrangels Allé 90,
29111 Färlöv-Kristianstad, Tel. (044) 712 74, Fax (044) 718 48

Switzerland:

Selzam AG, Harzachstraße 8, 8404 Winterthur,
Tel. (052) 233 25 21, Fax (052) 232 97 15

Turkey:

Karyat Karavan Yat San. Tic. Ltd. Sti., KUSDILI Cad.
Efers Ishani Kat: 3 No: 171 Kadiköy, 81310 Istanbul,
Tel. (0216) 418 73 96, Fax (0216) 418 73 97

Sales address:

Manufacturer:

Truma Gerätetechnik GmbH & Co. KG
Wernher-von-Braun-Str. 12
85640 Putzbrunn bei München
Postfach 1252 · D-85637 Putzbrunn
www.truma.com